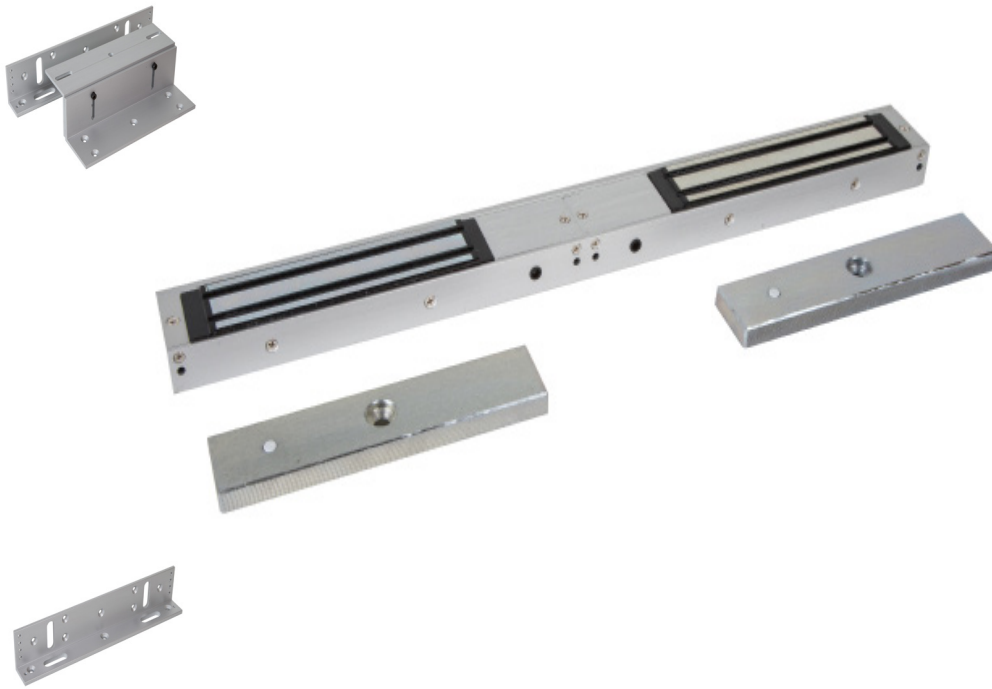


Electronic Locking Magnet Range



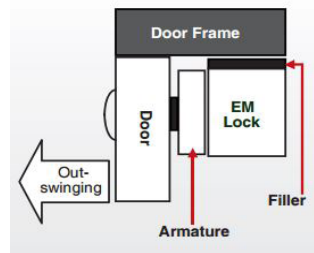
Magnet Range



Double Slimline Magnetic Lock (600lb)

Technical specifications

- Aluminium housing.
- 12/24Vdc @480/240mA x2
- 280kgs (600lb) holding force x2
- Built in surge protection.
- ML600-D-M = Monitored



FEATURES

- Slimline mini magnet
- Clean and compact design in aluminium.
- Multi LED indication and monitoring on ML600-D-M
- No residual magnetism.

Suitable brackets:

- BK600ZL (ZL Bracket) x 2
- BK600L (L Bracket) x 2
- AH600 (Armature Housing) x 2

ML600-D / ML600-D-M	500x42x25 (mm)	Double Magnetic Lock 600lb / 280kg	3.94Kg (Boxed) / 2.26Kg (Unboxed)
Armature	180x35x10 (mm)	Metal armature plate	664g (Unboxed)
BK600ZL	Z = 180L (mm)	ZL Bracket	644g (Boxed) / 556g (Unboxed)
BK600L	L = 251L (mm)	L Bracket	188g (Unboxed)

Other items in the RGL range.

